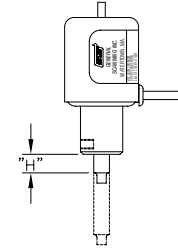
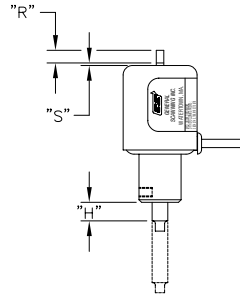
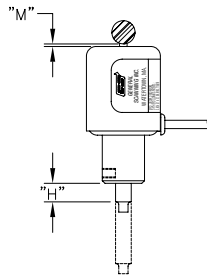
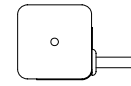
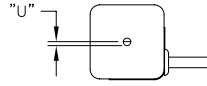
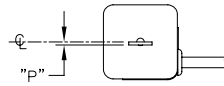
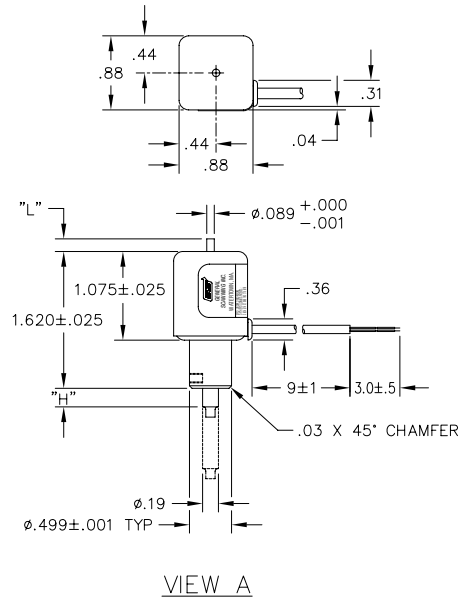


PROPERTY OF GENERAL SCANNING

This document is and shall remain an unpublished work of General Scanning protected by copyright, is loaned for limited purposes only, remains the property of General Scanning, and is to be returned upon request. Neither it nor any of the information it contains will be reproduced, used, or disclosed to anyone not having a need-to-know consistent with the purpose of the loan, without written consent of General Scanning.



VIEW B

VIEW C

VIEW D

| DASH | HUB EXT. | VIEW A    |      | VIEW B    |                | VIEW C    |      |           | VIEW D |     |
|------|----------|-----------|------|-----------|----------------|-----------|------|-----------|--------|-----|
|      | "H"      | "L"       | "M"  | "P"       | MIRROR SIZE    | "R"       | "S"  | "U"       | "X"    | "Y" |
| -1   | .22 MAX  | .17/.20   |      |           |                |           |      |           |        |     |
| -2   | .95 MAX  | .17/.20   |      |           |                |           |      |           |        |     |
| -3   | .95 MAX  |           | .030 | .037±.010 | Ø7mm X 1mm THK |           |      |           |        |     |
| -4   | .22 MAX  |           |      |           |                | .150±.005 | .030 | .047±.005 |        |     |
| -5   | .22 MAX  | .090/.098 |      |           |                |           |      |           |        |     |

NOTE :

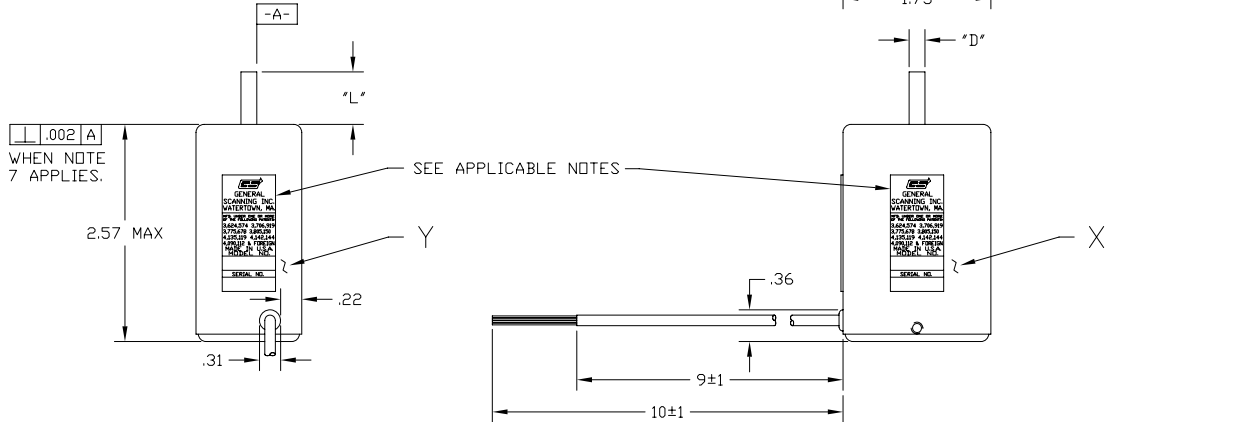
1. ALL DIMENSIONS ±.020 UNLESS OTHERWISE SPECIFIED.

For Reference Only  
Do NOT use for your design!

Contact CTI for the latest information on the product of your interest.

PROPERTY OF GENERAL SCANNING

This document is and shall remain an unqualified work of General Scanning protected by copyright. It is loaned for limited purposes only; remain the property of General Scanning, and is to be returned upon request. Neither it nor any of the information it contains will be reproduced, used, or disclosed to anyone not having a need-to-know consistent with the purpose of the loan, without written consent of General Scanning.



| DASH | SHAFT   |          | TAP SPACING |      |      |       | TAP SIZE    | LEADS FROM | APPLICABLE NOTES |
|------|---------|----------|-------------|------|------|-------|-------------|------------|------------------|
|      | L       | DIA      | A           | B    | C    | D     |             |            |                  |
| 1    | .62±.05 | .187 REF | .450        | .900 | .700 | 1.400 | M3 X .5mm   | SIDE       | 3, 5, & 7        |
| 2    | .62±.05 | .187 REF | .450        | .900 | .700 | 1.400 | 6-32 UNC-2B | SIDE       | 3, 5, & 7        |
| 3    | .74±.05 | .187 REF | .450        | .900 | .700 | 1.400 | 6-32 UNC-2B | SIDE       | 3, 5, & 7        |
| 4    | 1.375   | .187 REF | .450        | .900 | .700 | 1.400 | 6-32 UNC-2B | SIDE       | 3, 5, & 7        |
| 5    | .62±.05 | .187 REF | .375        | .750 | .562 | 1.125 | 6-32 UNC-2B | SIDE       | 3, 5, & 7        |

NOTES:

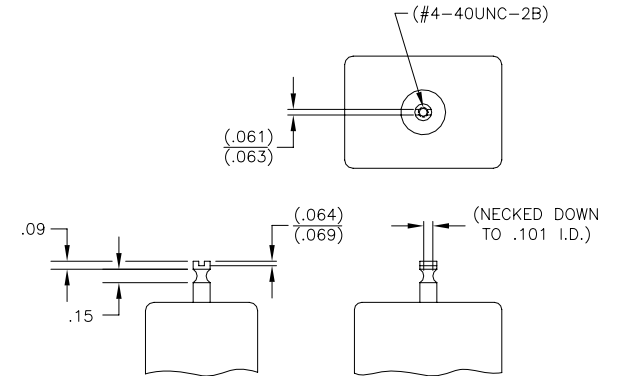
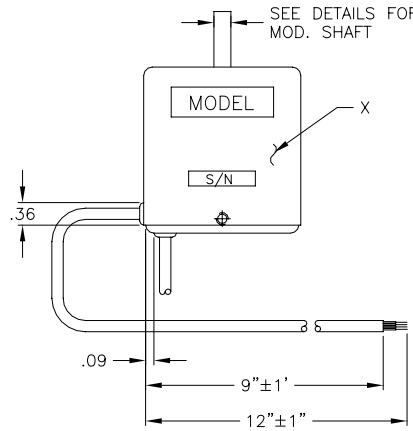
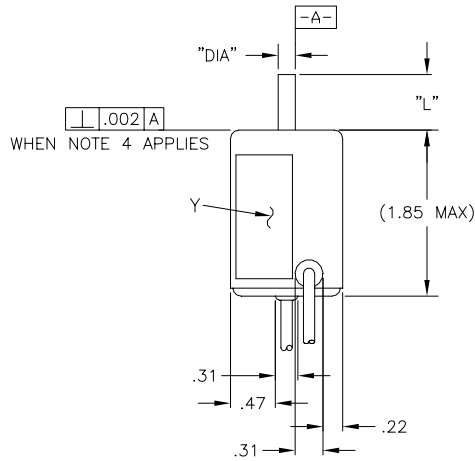
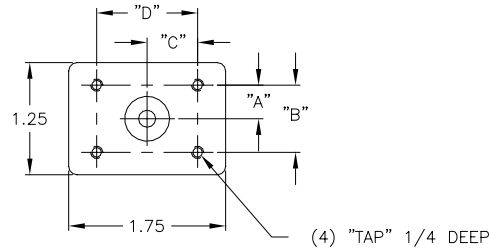
1. STRIPPED & TINNED 1/2±1/8
2. STRIPPED & TINNED FOR REC.
3. NO STRIPPING REQUIRED.
4. LABEL AFFIXED SIDE X.
5. LABEL AFFIXED SIDE Y.
6. NO LABELS STAMPED.
7. STATOR FACED OFF.

For Reference Only  
Do NOT use for your design!

Contact CTI for the latest information on the product of your interest.

NOTES:

1. NO STIPPING REQUIRED.
2. LABEL AFFIXED SIDE "X"
3. MODEL NUMBER LABEL
4. STATOR FACED OFF.



DETAIL-B-

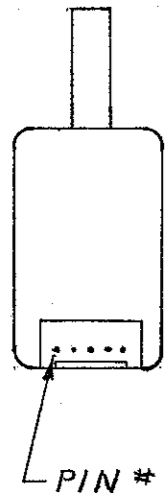
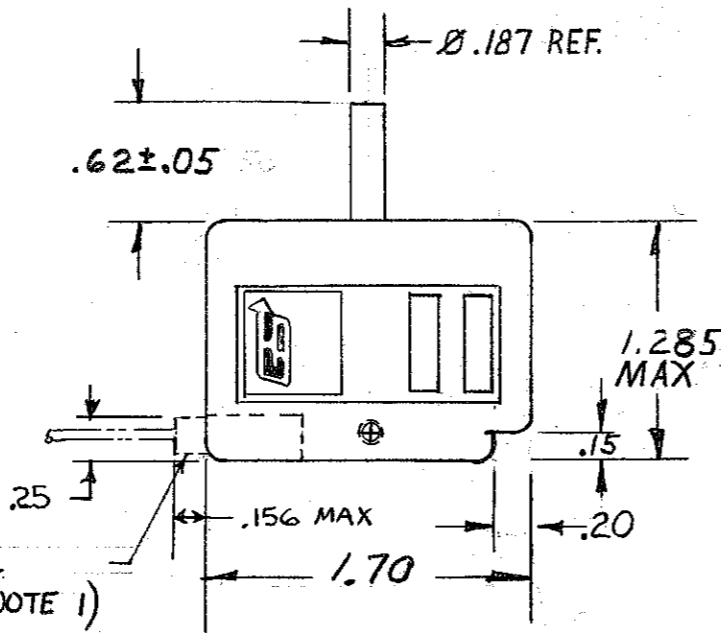
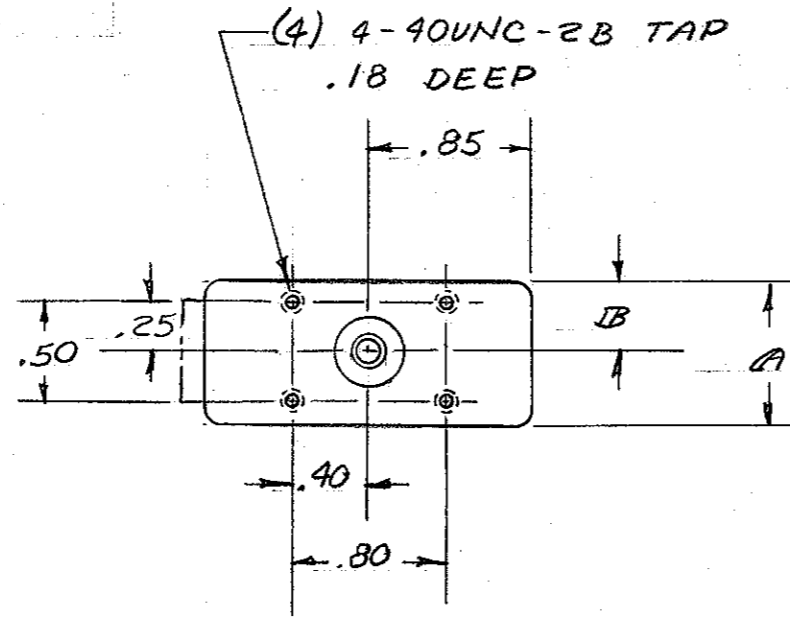
| DASH NO | SHAFT   |          | TAP SPACING |      |      |       | TAP SIZE   | LEADS FROM | MODIFIED SHAFT LEADS | APPLICABLE NOTES |
|---------|---------|----------|-------------|------|------|-------|------------|------------|----------------------|------------------|
|         | ±.05    | DIA      | A           | B    | C    | D     |            |            |                      |                  |
| -1      | .62     | .187 REF | .375        | .750 | .562 | 1.125 | 6-32UNC-2B | SIDE       |                      | 1&2              |
| -2      | .62     | .187 REF | .375        | .750 | .562 | 1.125 | M3X.5mm    | SIDE       |                      | 1&2              |
| -6      | .47     | .187 REF | .375        | .750 | .562 | 1.125 | M3X.5mm    | SIDE       |                      | 1&2              |
| -7      | .62     | .187 REF | .450        | .900 | .700 | 1.400 | 6-32UNC-2B | SIDE       |                      | 1&2              |
| -9      | .22±.01 | .187 REF | .375        | .750 | .562 | 1.125 | M3X.5mm    | SIDE       |                      | 1&2              |
| -11     | .35     | .187 REF | .375        | .750 | .562 | 1.125 | 6-32UNC-2B | BOTTOM     | DETAIL "B"           | 1&4              |
| -12     | 1.35    | .187 REF | .375        | .750 | .562 | 1.125 | 6-32UNC-2B | SIDE       |                      | 1&2              |
| -13     | .62     | .187 REF | .375        | .750 | .562 | 1.125 | 6-32UNC-2B | BOTTOM     |                      | 1&2              |
| -15     | .41     | .187 REF | .450        | .900 | .700 | 1.400 | 6-32UNC-2B | SIDE       |                      | 1&2,4            |

For Reference Only  
Do NOT use for your design!

Contact CTI for the latest information on the product of your interest.

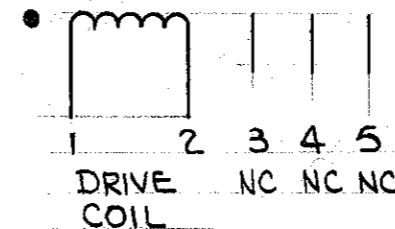
PROPERTY OF GENERAL SCANNING

This document is and shall remain an unpublished work of General Scanning protected by copyright, is loaned for limited purposes only, remains the property of General Scanning, and is to be returned upon request. Neither it nor any of the information it contains will be reproduced, used, or disclosed to anyone not having a need-to-know consistent with the purpose of the loan, without written consent of General Scanning.



FEMALE CONN.  
OUTLINE (SEE NOTE 1)

| DASH NO | SERIES   | A   | B   |
|---------|----------|-----|-----|
| -1      | GM OR MM | .75 | .37 |
| -2      | MM12A    | .71 | .35 |
|         |          |     |     |



NOTE:

1. OPTIONAL WAFER PLUG ASSY: A210-0482B

MOLEX CONN NO. 22-01-2055

PIN NO. 08-56-0110 OR

EQUIVALENT

For Reference Only  
Do NOT use for your design!

Contact CTI for the latest information on  
the product of your interest.