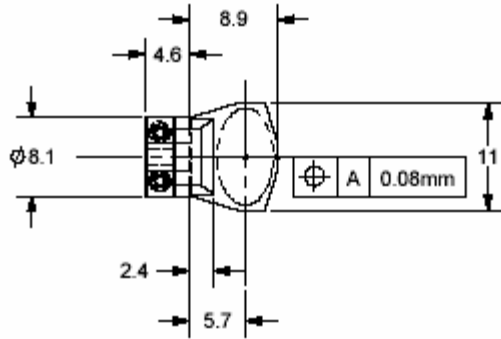


$$J = .074g \cdot \text{cm}^2$$

## 6220 5mm Mirror Outline

### X Configuration

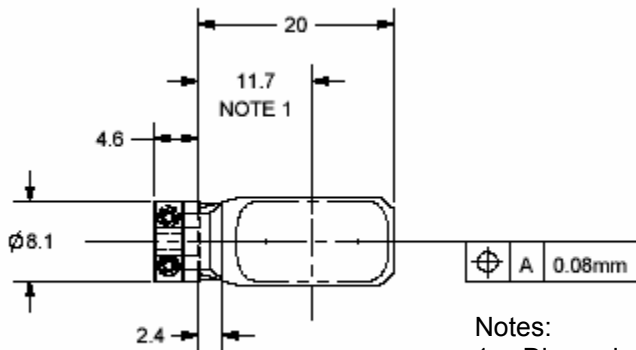


#### Notes:

1. Dimension from the end of the shaft to the center of the clear aperture.
2. Clear aperture: Major Axis = 10.0mm, Minor Axis = 5mm
3. Beam aperture = 5mm
4. Angles of incidence =  $45^\circ \pm 15^\circ$
5. Screw size = #00-90 x 3/16"
6. Hex key size = .035"
7. Recommended screw torque: 0.09N\*m (0.8 in \* lbs.)

### Y Configuration

$$J = .086 g \cdot \text{cm}^2$$



#### Notes:

1. Dimension from the end of the shaft to the center of the clear aperture.
2. Clear aperture: Major Axis = 15.6mm, Minor Axis = 8.2mm
3. Beam aperture = 5mm
4. Angles of incidence =  $36.5^\circ \pm 15^\circ$
5. Screw size = #00-90 x 3/16"
6. Hex key size = .035"
7. Recommended screw torque: 0.09N\*m (0.8 in \* lbs.)