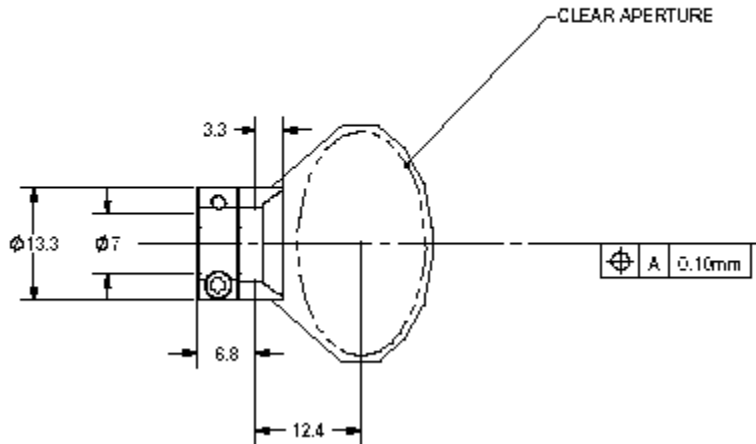


6240 15 mm Asymmetric

15 mm X Configuration

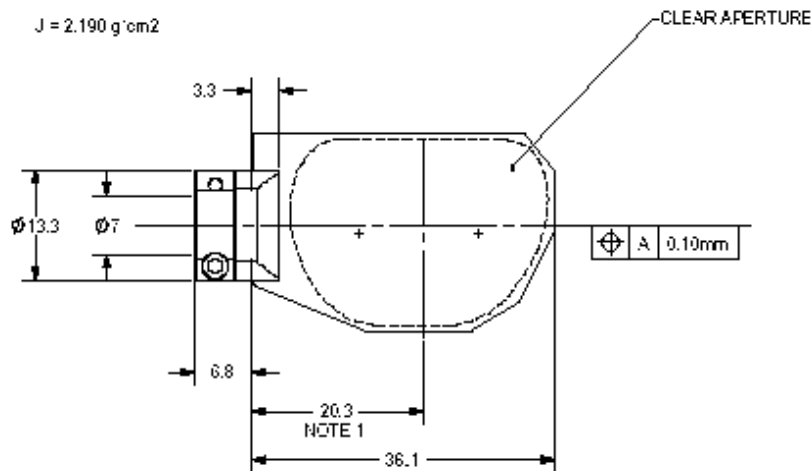
J = 1.366 g*cm²



- NOTES:
1. DIMENSION FROM THE END OF THR SHAFT TO THE CENTER OF THE CLEAR APERTURE
 2. CLEAR APERTURE:
LONG AXIS = 26.2mm
SHORT AXIS = 15mm
 3. BEAM APERTURE = 15mm
 4. PEAK TO PEAK INTENDED OPTICAL SCAN ANGLE = 40°
 5. ANGLES OF INCIDENCE = 45° ± 10°
 6. SCREW SIZE = #1-72 x 1/4
 7. HEX KEY SIZE = .06 IN FLAT-END ALLEN ONLY
 8. RECOMMENDED SCREW TORQUE = 0.43 N*m (3.8 IN/LBS)

15 mm Y Configuration

J = 2.190 g*cm²



- NOTES:
1. DIMENSION FROM THE END OF THR SHAFT TO THE CENTER OF THE CLEAR APERTURE
 2. CLEAR APERTURE:
LONG AXIS = 31.5mm
SHORT AXIS = 22.2mm
 3. BEAM APERTURE = 15mm
 4. PEAK TO PEAK INTENDED OPTICAL SCAN ANGLE = 40°
 5. ANGLES OF INCIDENCE = 36.5° ± 10°
 6. SCREW SIZE = #1-72 x 1/4
 7. HEX KEY SIZE = .06 IN FLAT-END ALLEN ONLY
 8. RECOMMENDED SCREW TORQUE = 0.43 N*m (3.8 IN/LBS)

