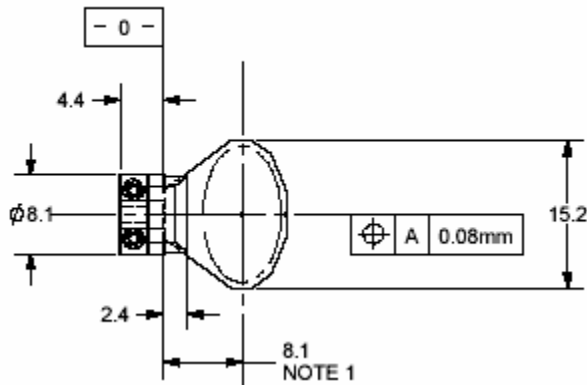


## 6220 8mm Outline Mirror Drawing

### X Configuration

$$J = .118 \text{ g*cm}^2$$

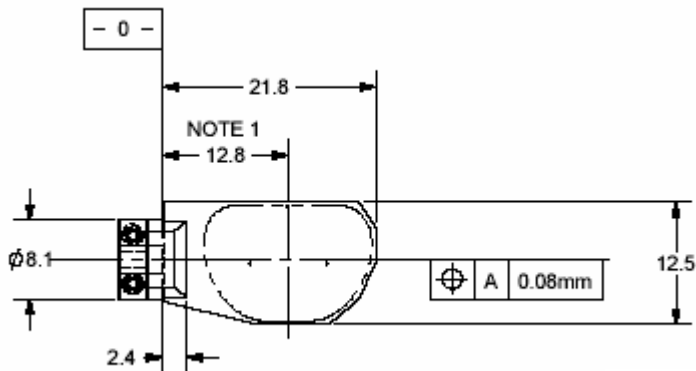


#### Notes:

1. Dimension from the end of the shaft to the center of the clear aperture
2. Clear aperture: Major axis = 13.9 mm, minor axis = 8mm
3. Beam aperture = 8mm
4. Angles of incidence =  $45^\circ \pm 10^\circ$
5. Screw size = #00-90 x 3/16"
6. Hex key size = .035"
7. Recommended screw torque:

### Y Configuration

$$J = .152 \text{ g*cm}^2$$



#### Notes:

1. Dimension from the end of the shaft to the center of the clear aperture
2. Clear aperture: Major axis = 17.2 mm, minor axis = 11.8mm
3. Beam aperture = 8mm
4. Angles of incidence =  $36^\circ \pm 10^\circ$
5. Screw size = #00-90 x 3/16"
6. Hex key size = .035"
7. Recommended screw torque: 0.09N\*m (0.8 in\* lbs.)