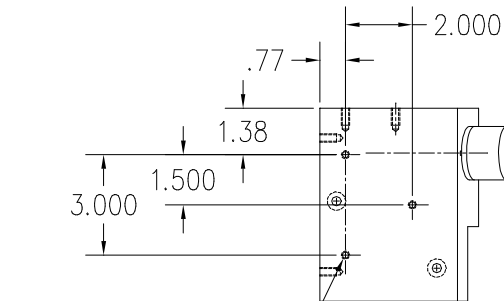
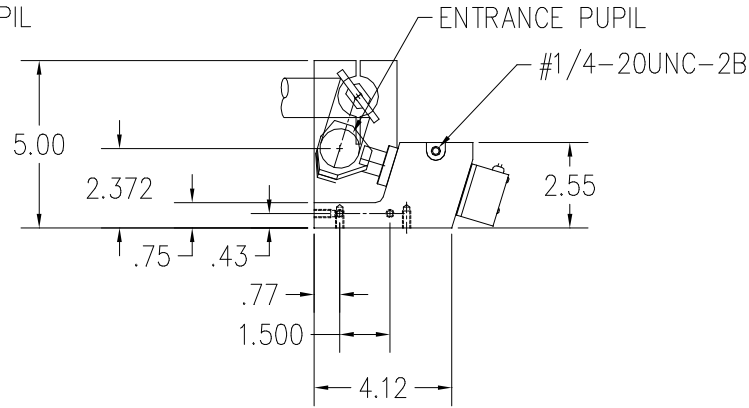
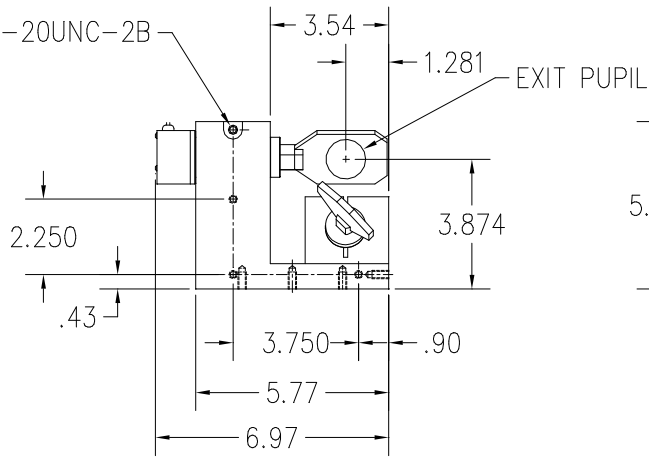
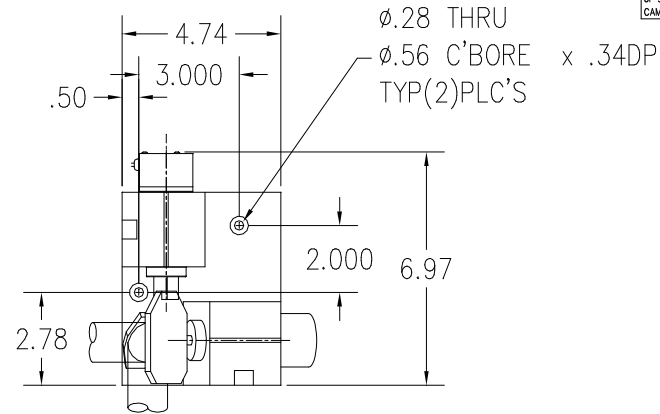


These drawings and specifications are the property of CAMBRIDGE TECHNOLOGY and shall not be reproduced, or copied, or used as the basis for the manufacture, or sale of apparatus without the written permission of CAMBRIDGE TECHNOLOGY, INC.

REVISION				
ECO	REV	DESCRIPTION	CHK	DATE
25/70	B	UPDATE TO CURRENT MNT DESIGN	PTH	02/04
3435	C	NOTES 1+2 ADDED	PTH	05/06



NOTES:

1. ALL DIMENSIONS ARE FOR REFERENCE ONLY.
2. RECOMMENDED X-Y MOUNT CLAMP SCREW TORQUE = 120in\*lb<sub>f</sub> (13.56N\*m).
3. CLAMP SCREW TORQUE TOLERANCE = ±5%.

UNLESS OTHERWISE SPECIFIED	DRN	05/20/99	PTH	CAMBRIDGE TECHNOLOGY, INC.
TOLERANCES	DES			109 SMITH PLACE
.XX = ±0.010	CHK			CAMBRIDGE, MA 02138 - USA
.XXX = ±0.005	ENG			
( ) INDICATES mm	APPR			6880 XY INTERFACE RH
ANGLES: 0°-30°	PROJECTION			30mm±10' MECH
SURFACE ROUGHNESS 63/	REVISION			D03904
BREAK ALL SHARP EDGES	FINISH			SCALE: 1/2
MATERIAL	USED ON		C	SHEET 1 OF 1