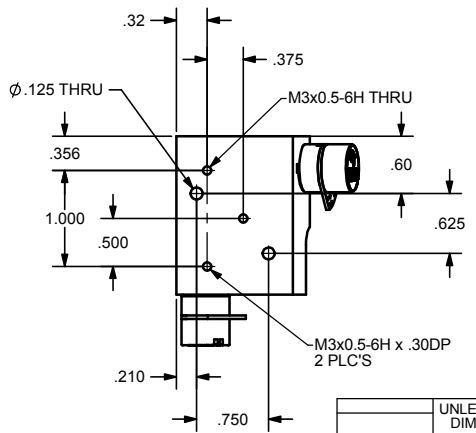
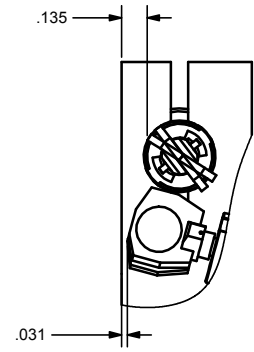
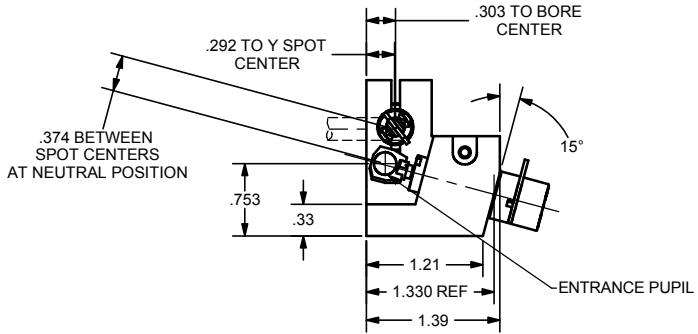
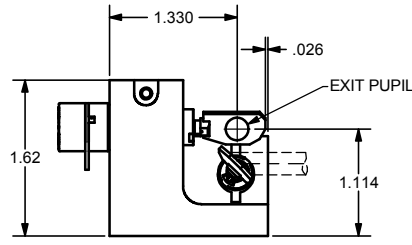
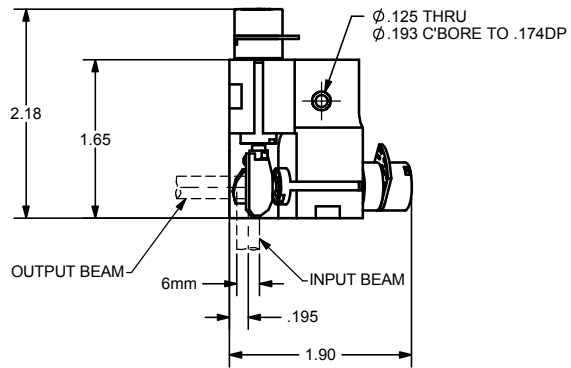


ECO		REVISIONS		APPR	DATE
NO.	REV	DESCRIPTION			
3435	B	Add clamp screw torque Add dimension .303 from XY mount face to y scanner bore center Add dimension .292 from XY mount face to Y spot center Change overall dimension to 2.18 from 2.17 Remove dimension 1.027, add 1.330 REF. instead. Add dimension 1.39		JZ	05/15/06
4059	C	THE DIMENSION BETWEEN SPOT CENTERS AT NEUTRAL POSITION WAS 411		JZ	12/12/07



- NOTES:
 1. ALL DIMENSIONS ARE FOR REFERENCE ONLY.
 2. RECOMMENDED X-Y MOUNT CLAMP SCREW TORQUE= 11.5 in*lb (1.30 N*m).
 3. CLAMP SCREW TORQUE TOLERANCE = $\pm 10\%$.

These drawings and specifications are the property of CAMBRIDGE TECHNOLOGY and shall not be reproduced, or copied, or used as the basis for the manufacture, or sale of apparatus without the written permission of CAMBRIDGE TECHNOLOGY, INC.

UNLESS OTHERWISE SPECIFIED DIMENSIONS ARE IN INCHES		DRN	CAMBRIDGE TECHNOLOGY, INC.	
TOLERANCES		ENG JHL 06/02/03	25 HARTWELL AVENUE	
.XX \pm .010	ANGLES \pm 0°-30'	APPR	LEXINGTON, MA 02421 - USA	
.XXX \pm .005		PROJECTION	TITLE	
.XXX \pm .0005		[] INDICATES mm	6210 X-Y MOUNT INTERFACE, RH ϕ6mm, 40° OPT.	
[] INDICATES mm		SURFACE ROUGHNESS $\sqrt{63}$		
BREAK ALL SHARP EDGES		DRAWING SIZE: C	DRW. NO.	REVISION
MATERIAL	N/A		D05682	C
6102106R40	FINISH N/A		SCALE 1:1	SHEET 1 OF 1
USED ON				