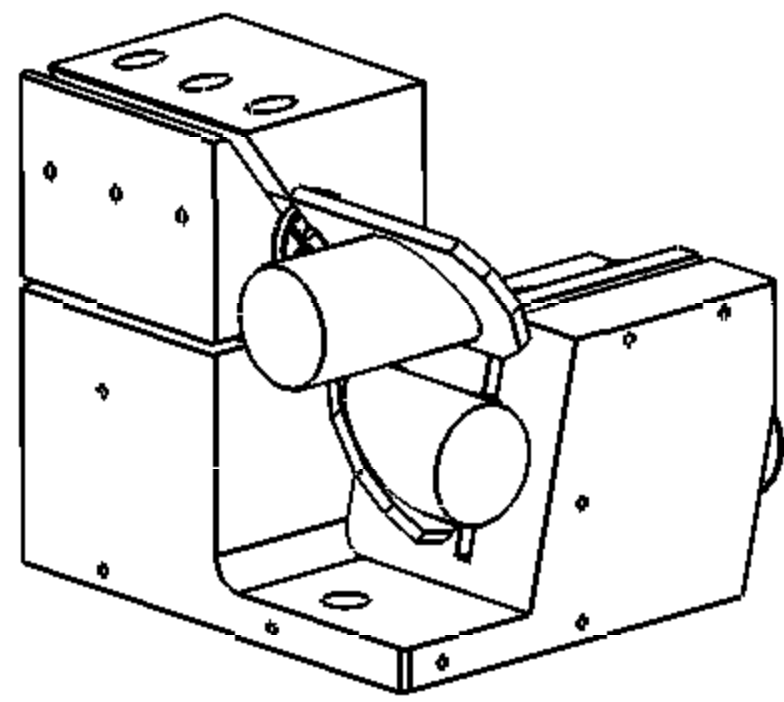


| REVISIONS | | | | |
|-----------|-----|-------------|------|------|
| ECO | REV | DESCRIPTION | APPR | DATE |
| | | | | |



Ø.281 THRU
C'BORE Ø.75 \pm .31
2X

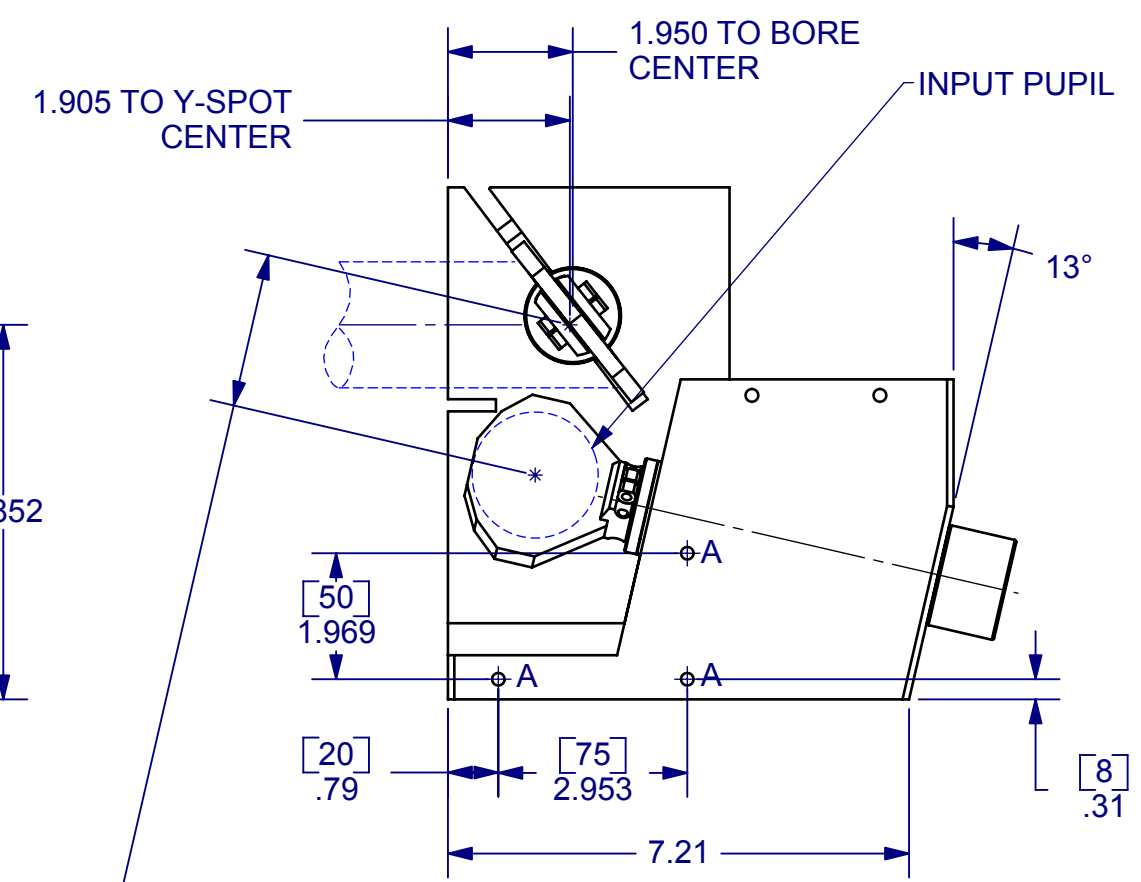
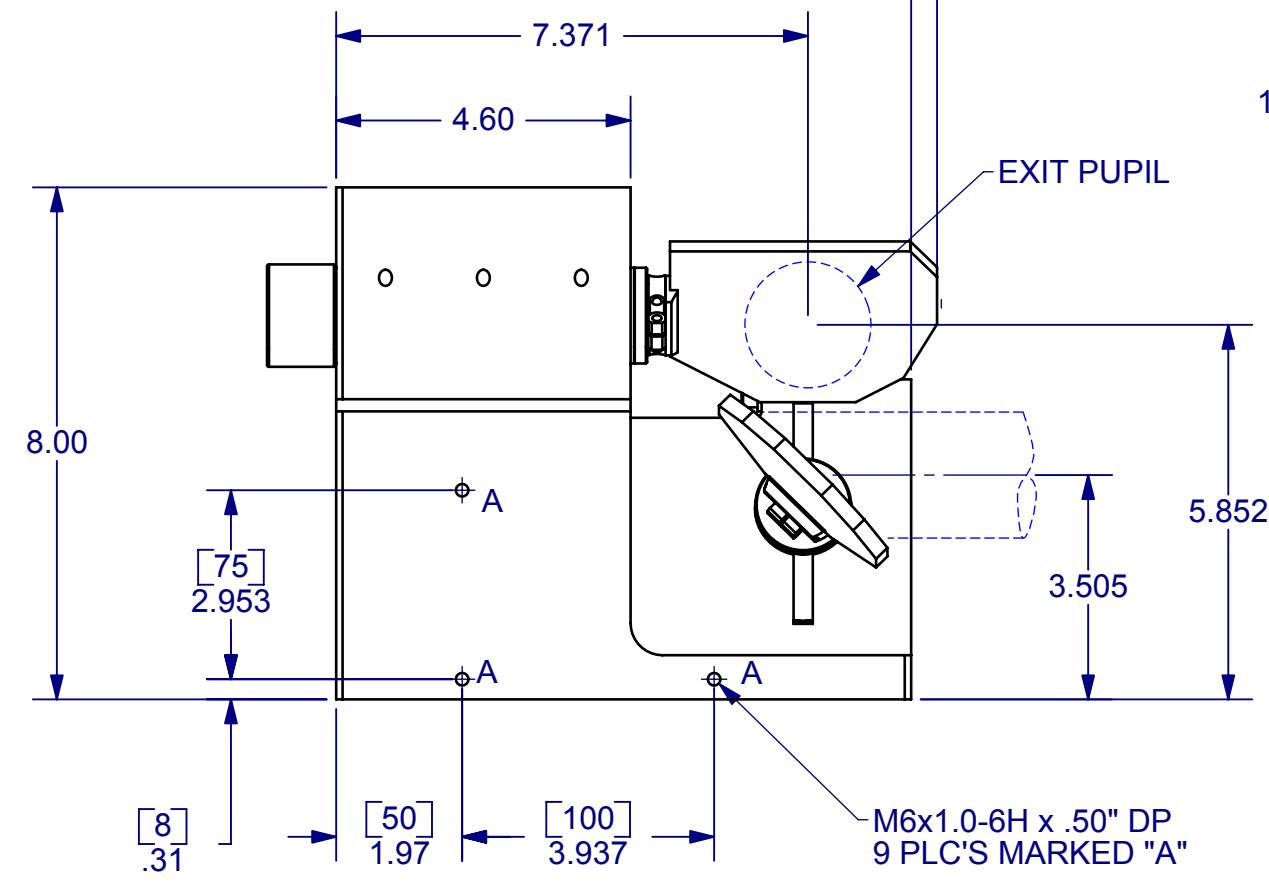
OUTPUT BEAM

INPUT BEAM

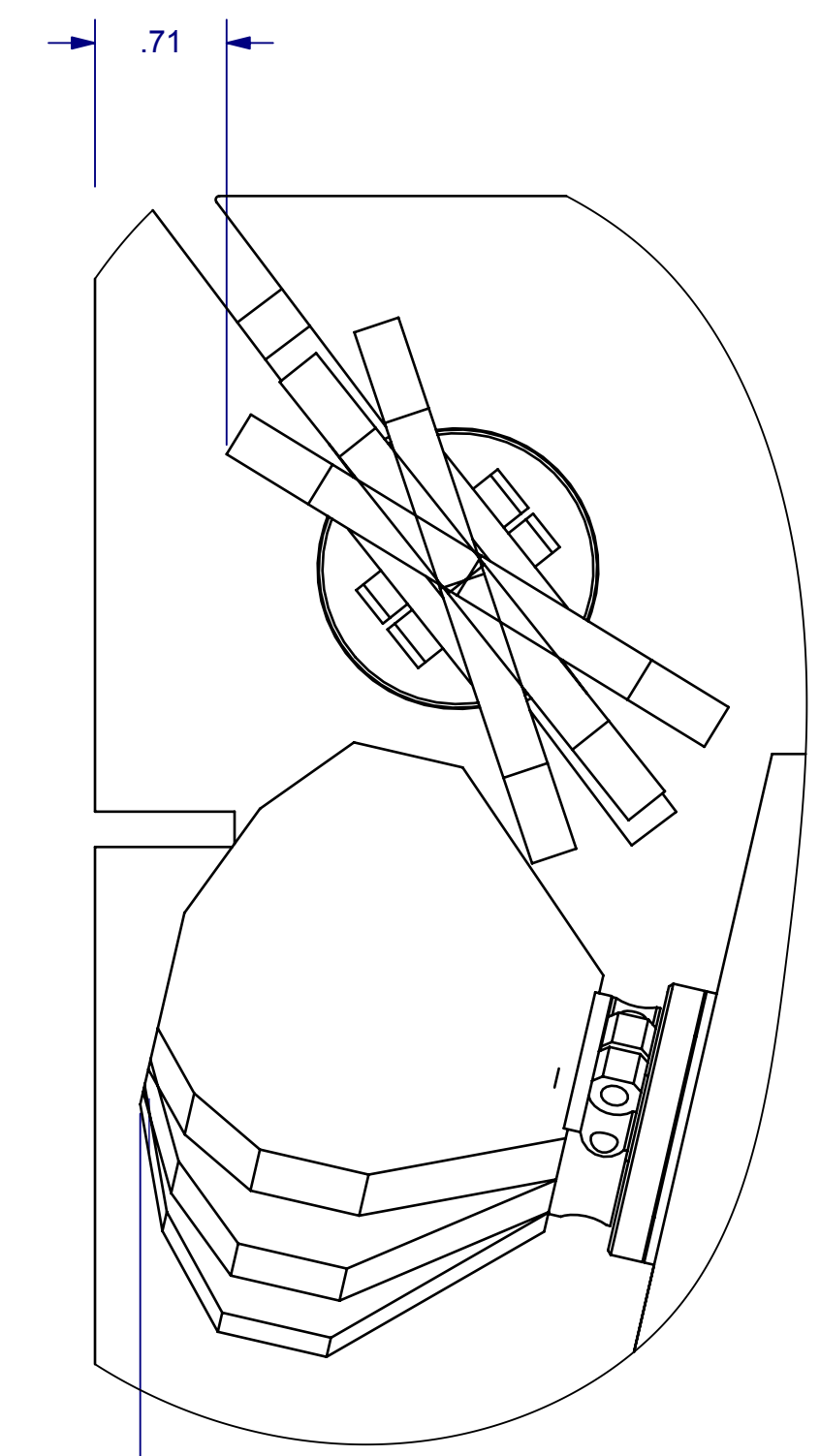
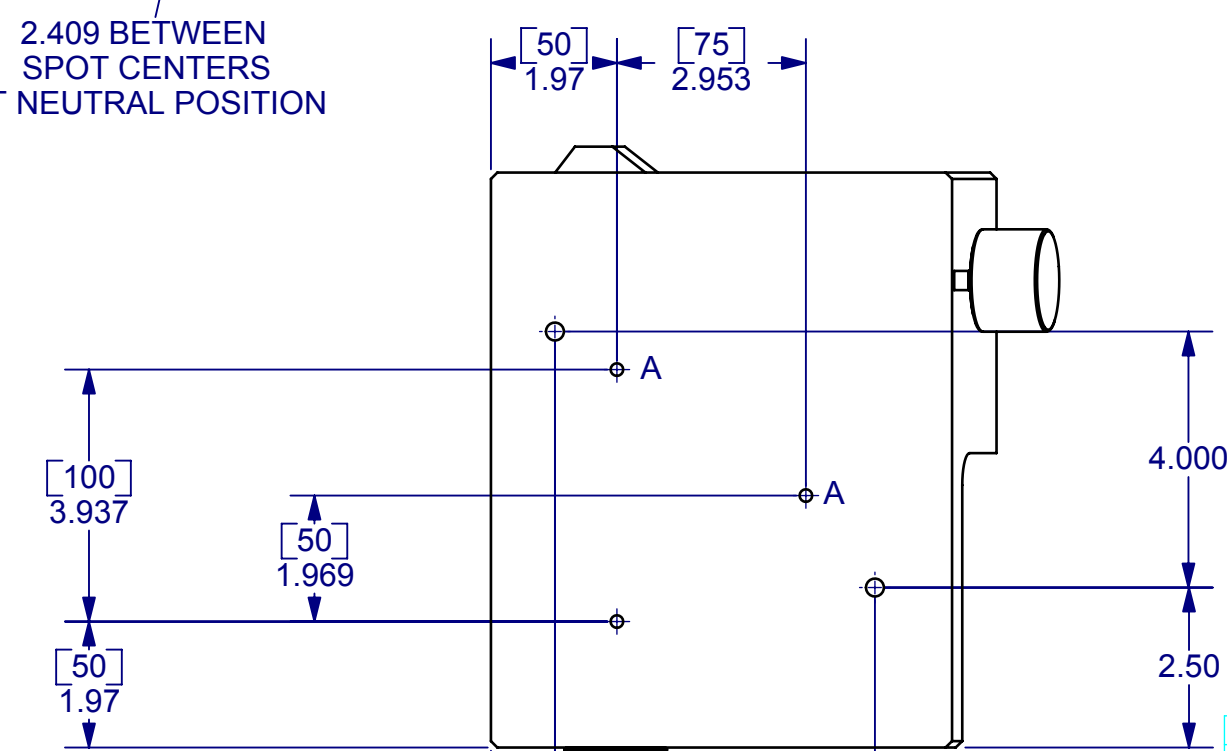
INPUT PUPIL

EXIT PUPIL

CAUTION!
MIRROR PROTRUDES .40
BEYOND MOUNT



2.409 BETWEEN
SPOT CENTERS
AT NEUTRAL POSITION



AUXILIARY VIEW
SCALE 1:1
DIMENSIONS ON THIS VIEW REPRESENT SMALLEST
DISTANCES DURING MIRRORS' FULL ANGULAR RANGE

NOTES:

1. TIGHTEN CLAMPING SCREWS WITH 90 TO 100 IN*LB TORQUE (10.2 TO 11.3 N*m).
2. USE 3/16" FLAT HEX HEAD BIT OR ALLEN WRENCH.
3. TIGHTEN EACH SCREW SLIGHTLY THEN MOVE TO NEXT. REPEAT UNTIL ALL SCREWS REACH FULL TORQUE

These drawings and specifications are the property of CAMBRIDGE TECHNOLOGY and shall not be reproduced, or copied, or used as the basis for the manufacture, or sale of apparatus without the written permission of CAMBRIDGE TECHNOLOGY, INC.

| | | | | |
|--|---------------------|-----------------|-------------------------------|--------------|
| UNLESS OTHERWISE SPECIFIED DIMENSIONS ARE IN INCHES | | DRN | CAMBRIDGE TECHNOLOGY, INC. | |
| TOLERANCES | | ENG JHL | 25 HARTWELL AVENUE | |
| .XX \pm .010 | ANGLES \pm 0°-30' | APPR | LEXINGTON, MA 02421-3102, USA | |
| .XXX \pm .005 | | PROJECTION | TITLE | |
| .XXXX \pm .0005 | | DRAWING SIZE: C | 6260 | |
| [] INDICATES mm | | | X-Y MOUNT INTERFACE | |
| SURFACE ROUGHNESS $\sqrt{63}$ | | | RH, Ø 50mm, 40° OPT. | |
| BREAK ALL SHARP EDGES | | | DRW. NO. | REVISION |
| MATERIAL N/A | | | D07614 | A |
| 6102650R40 | FINISH N/A | | SCALE 1:3 | SHEET 1 OF 1 |
| USED ON | | | | |