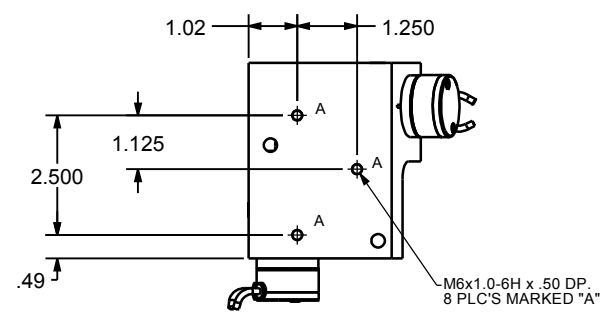
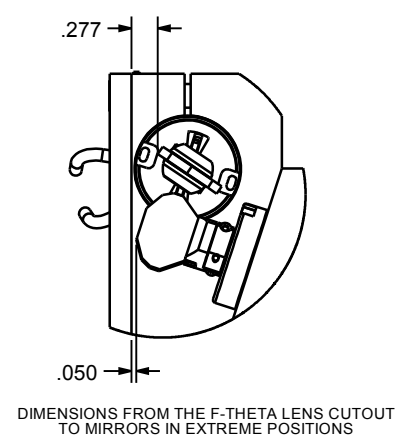
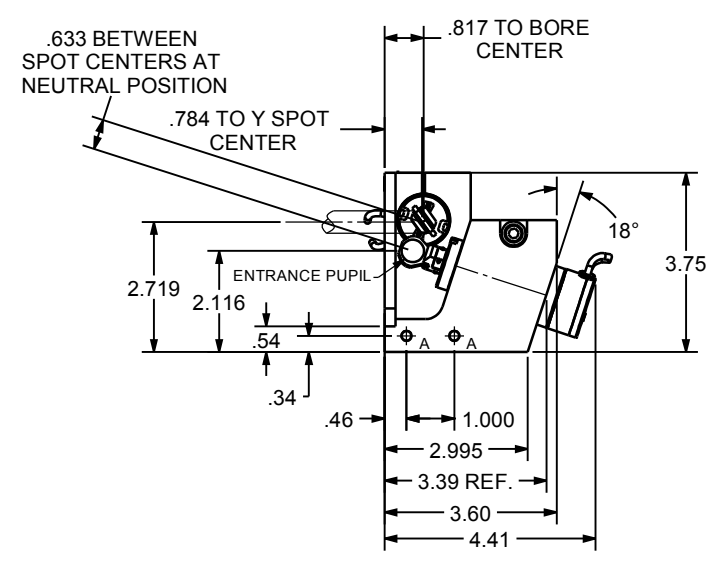
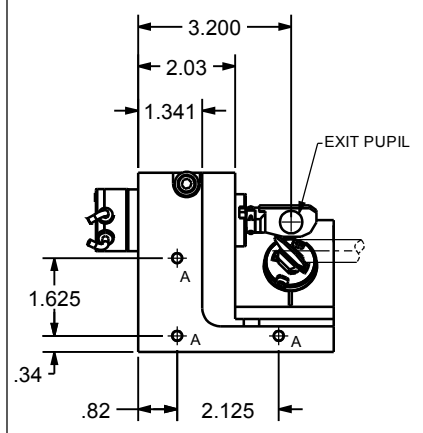
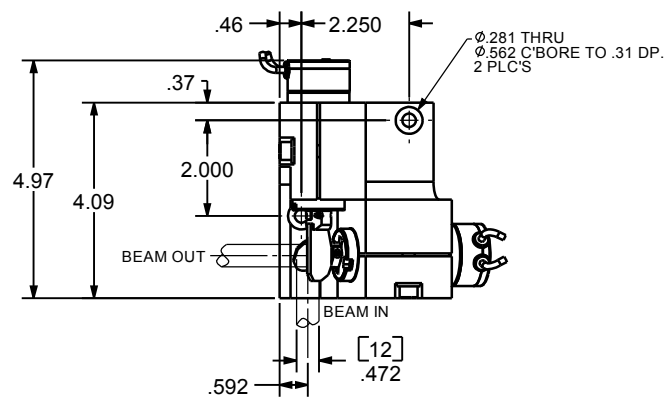


		REVISIONS		APPR	DATE
ECO	REV	DESCRIPTION			
3435	B	Add hole for clamp screw torque Change dimension to 4.67 from 4.954 Change dimension to 4.11 from 4.155 Add dimension .817 from Y scanner bore center to XY mount Add dimension .053 between spot centers at neutral position Add dimension 8.00 and 8.39 REF.		JZ	05/15/06



- NOTES:
 1. ALL DIMENSIONS ARE FOR REFERENCE ONLY.
 2. RECOMMENDED X-Y MOUNT CLAMP SCREW TORQUE = 100 in*lb (11.30 N*m).
 3. CLAMP SCREW TORQUE TOLERANCE = ±5%.

These drawings and specifications are the property of CAMBRIDGE TECHNOLOGY and shall not be reproduced, or copied, or used as the basis for the manufacture, or sale of apparatus without the written permission of CAMBRIDGE TECHNOLOGY, INC.

UNLESS OTHERWISE SPECIFIED TOLERANCES		DRN		CAMBRIDGE TECHNOLOGY, INC. 109 SMITH PLACE CAMBRIDGE, MA 02138 - USA
.XX± .010	ANGLES± 0°-30'	ENG	AA 10/12/01	
.XXX± .005		APPR		TITLE
.XXXX± .0005		PROJECTION		6240 XY MOUNT INTERFACE, RH Ø12mm, 40°OPT
[] INDICATES mm		[] [⊕]		
SURFACE ROUGHNESS ⁶³		DRAWING SIZE: C		DRW. NO.
BREAK ALL SHARP EDGES				REVISION
MATERIAL	N/A			D04748 B
6240	FINISH			SCALE 1:2
USED ON	N/A			SHEET 1 OF 1