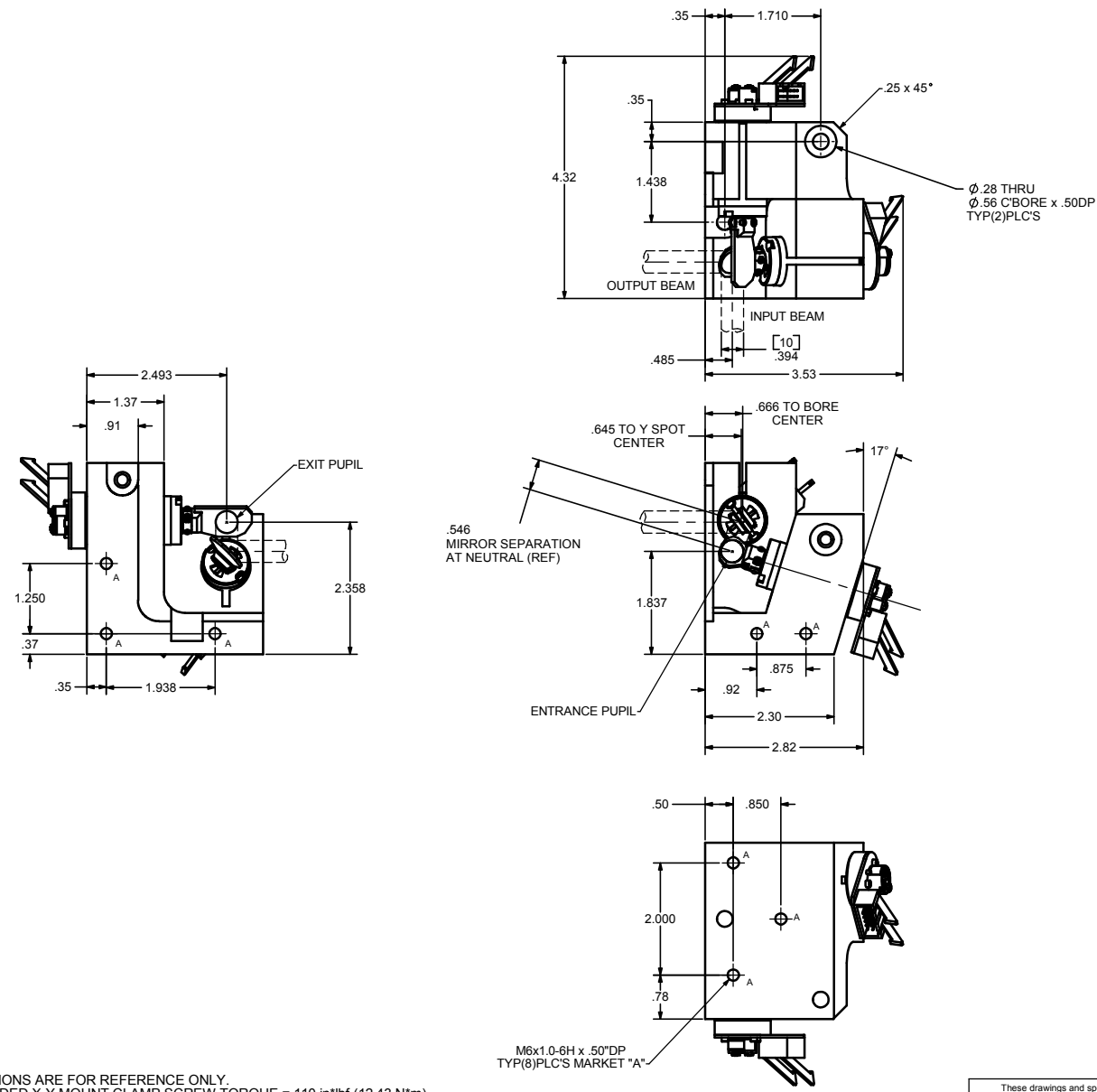


REVISIONS				
ECD	REV	DESCRIPTION	APPR	DATE
3435	B	Add note for clamp screw torque Add dimension 506 to bore center Add dimension 645 to Y spot center Remove dimension 1.988, add 2.655 REF. Instead Add dimension 2.82	JZ	05/15/06
4125	C	2.493 WAS 2.55; 1.37 WAS 1.36; .92 WAS .91; .37 WAS .37; .78 WAS .79; .26 WAS .26; 1.837 WAS 1.8367; REMOVE 2.3584, .48, 2.655 REF	JZ	01/23/08



- NOTES:
 1. ALL DIMENSIONS ARE FOR REFERENCE ONLY.
 2. RECOMMENDED X-Y MOUNT CLAMP SCREW TORQUE = 110 in*lbF (12.43 N*m).
 3. CLAMP SCREW TORQUE TOLERANCE = ± 5%.

These drawings and specifications are the property of CAMBRIDGE TECHNOLOGY and shall not be reproduced, or copied, or used as the basis for the manufacture, or sale of apparatus without the written permission of CAMBRIDGE TECHNOLOGY, INC.

UNLESS OTHERWISE SPECIFIED DIMENSIONS ARE IN INCHES	DRN	JHL	09/22/03	CAMBRIDGE TECHNOLOGY, INC. 25 HARTWELL AVE. LEXINGTON, MA 02421
TOLERANCES	ENG	JHL	09/22/03	TITLE
XX± .010	APPR			6231C
XXX± .005	PROJECTION			XY MOUNT INTERFACE, RH
XXXX±.0005				Ø10mm, 40° OPT
(1) INDICATES mm	DRAWING SIZE: D			DRW. NO.
SURFACE ROUGHNESS				REVISION
BREAK ALL SHARP EDGES				D05745 C
MATERIAL				SCALE 1:1
XXXX				SHEET 1 OF 1
USED ON				