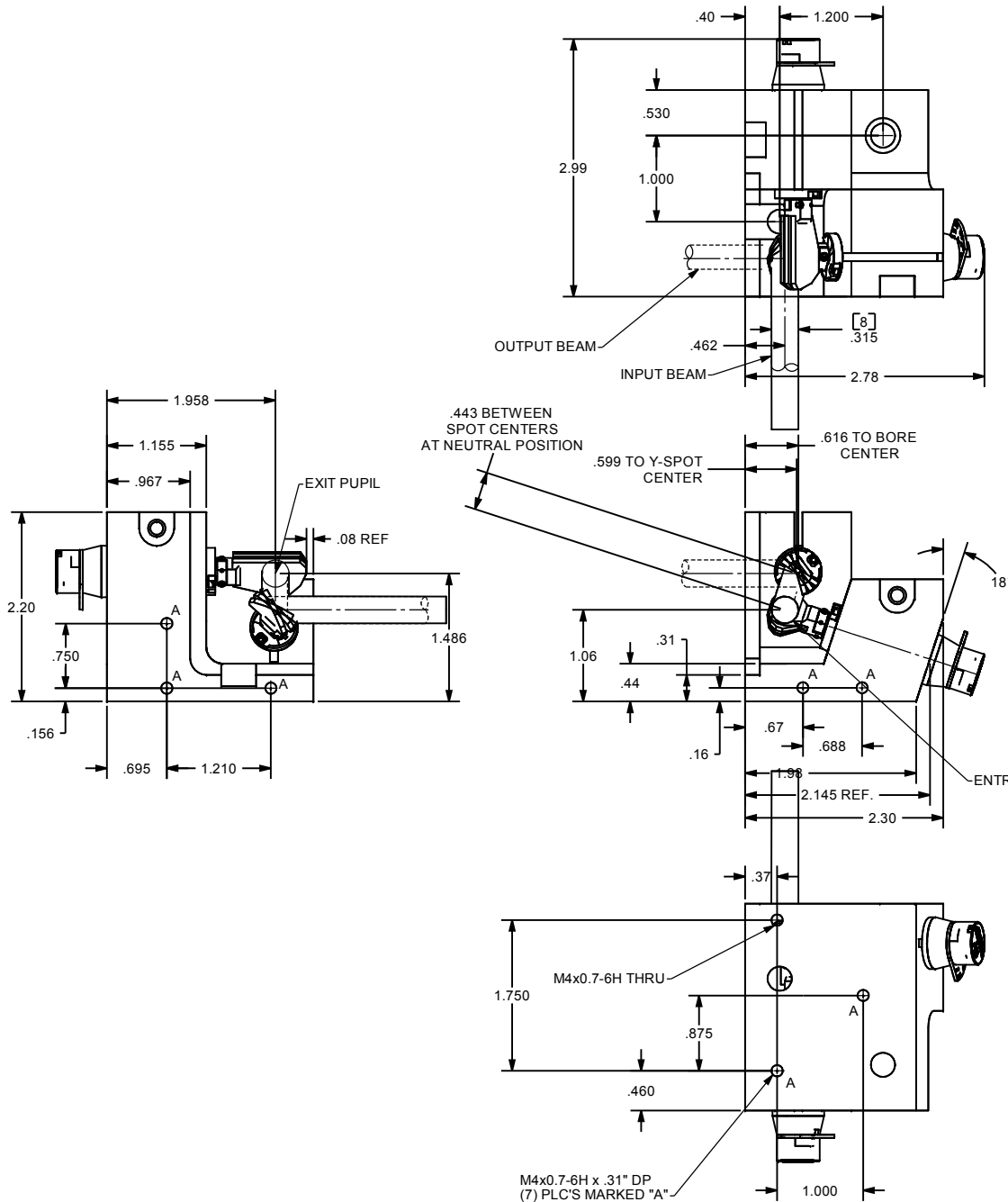


REVISIONS				
ECO	REV	DESCRIPTION	APPR	DATE
2910	B	Dims 2.20, .137, .443 BETW... added	PTH	01/01/05
2979	C	Dim. .269 / ACCED; NOTE / ACCED.	JHL	Mar-05
3435	D	Add note for clamp screw torque Remove dimension .137 between spot CFRS, mount FOS. Add dimension .616 from Y scanner bore center to the XY mount face Remove dimension 1.528 to bore center ø112.145 (111) hole-set Add dimension 2.90 to show the bottom view for the XY mount	JZ	05/15/06



.09 REPRESENTS SMALLEST DISTANCE DURING MIRRORS' FULL MECHANICAL ANGULAR RANGE

AUXILIARY VIEW
Scale = 3x

- NOTES:
1. ALL DIMENSIONS ARE FOR REFERENCE ONLY.
 2. RECOMMENDED X-Y MOUNT CLAMP SCREW TORQUE = 45 in*lb (5.08 N*m)
 3. CLAMP SCREW TORQUE TOLERANCE = ± 10%.

These drawings and specifications are the property of CAMBRIDGE TECHNOLOGY and shall not be reproduced, or copied, or used as the basis for the manufacture, or sale of apparatus without the written permission of CAMBRIDGE TECHNOLOGY, INC.

UNLESS OTHERWISE SPECIFIED		DRN	CAMBRIDGE TECHNOLOGY, INC. 109 SMITH PLACE CAMBRIDGE, MA 02138 - USA
TOLERANCES		ENG JHL 08/19/02	
.XX± .010 ANGLES± 0°-30'		APPR	TITLE
.XXX± .005		PROJECTION	
.XXXX± .0005		DRAWING SIZE: C	6220 XY MOUNT INTERFACE, RH Ø8mm BEAM, 40° OPT
[] INDICATES mm			
SURFACE ROUGHNESS $\sqrt{63}$			DRW. NO. D05173
BREAK ALL SHARP EDGES			REVISION D
MATERIAL	FINISH		SCALE 1:1 SHEET 1 OF 1
D05171	USED ON		