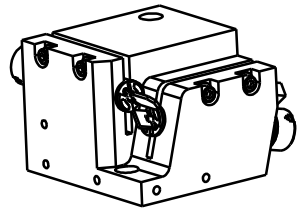
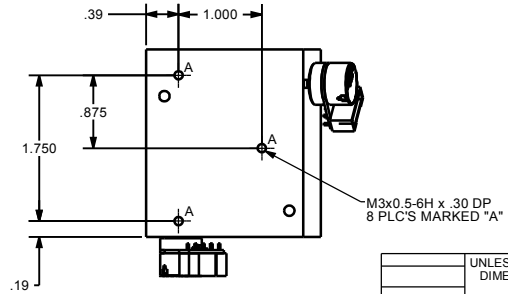
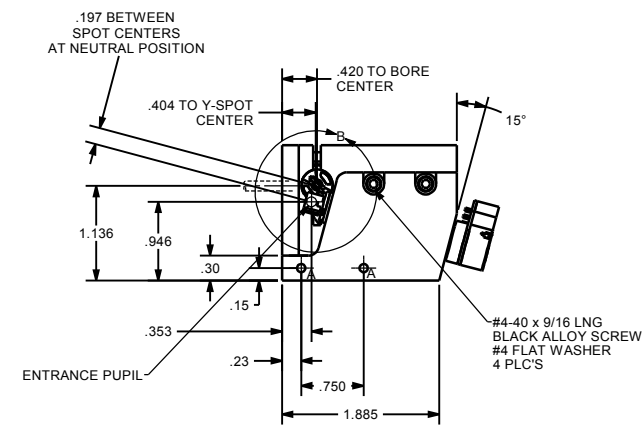
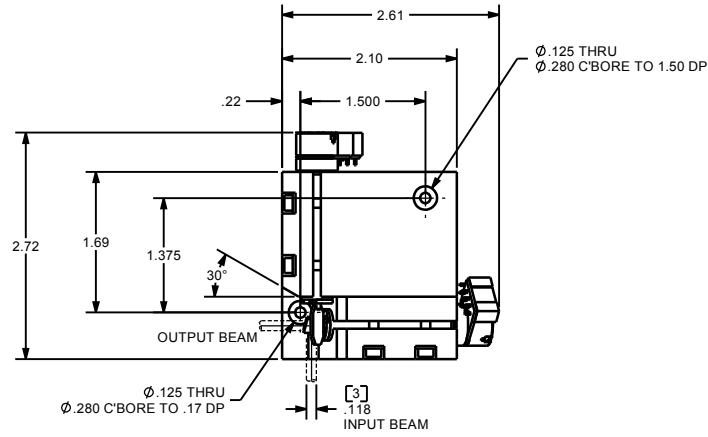
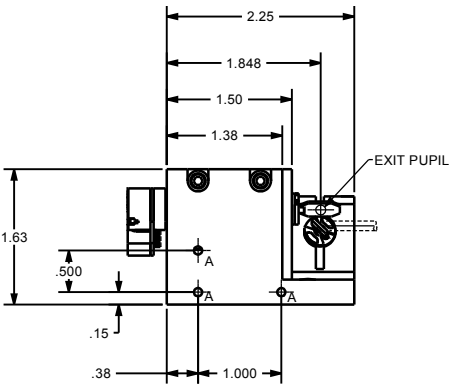


DIMENSIONS ON THIS VIEW REPRESENT SMALLEST DISTANCES DURING MIRRORS' FULL ANGULAR RANGE



REVISIONS				
ECO	REV	DESCRIPTION	APPR	DATE
2813	C	ENTRANCE AND EXIT PUPIL DIMS ADDED	PTH	Oct-04
3435	D	Add note for clamp screw torque Add dimension .420 from XY mount face to y scanner bore center Remove dimension 1.504, add 2.014 RCF. Instead Add dimension 2.19		May-06
4061	E	1.03 WAS 1.025; 402 WAS .390; .199 WAS .203	JZ	Dec-07
4433	F	6215HA GALVOS SHOWN; DIM .353 WAS .351; 404 WAS .402; .197 WAS .199; 1.136 WAS 1.137; .30 HOLE DP WAS .05	JHL	Sep-08

- NOTES:
- ALL DIMENSIONS ARE FOR REFERENCE ONLY.
  - RECOMMENDED XY MOUNT CLAMP SCREW TORQUE = 14 in\*lb (1.58 N\*m)
  - CLAMP SCREW TORQUE TOLERANCE = +/- 10%

These drawings and specifications are the property of CAMBRIDGE TECHNOLOGY and shall not be reproduced, or copied, or used as the basis for the manufacture, or sale of apparatus without the written permission of CAMBRIDGE TECHNOLOGY, INC.

UNLESS OTHERWISE SPECIFIED DIMENSIONS ARE IN INCHES		DRN		CAMBRIDGE TECHNOLOGY, INC. 25 HARTWELL AVENUE LEXINGTON, MA 02421-3102, USA
TOLERANCES		ENG	JE 12/05/03	
.XX±	.010 ANGLES± 0°-30'	APPR		TITLE
.XXX±	.005	PROJECTION		<b>6215H</b> <b>X-Y MOUNT INTERFACE</b> <b>RH, Ø 3mm, 60° OPTICAL</b>
.XXXX±	.0005			
[ ]	INDICATES mm	DRAWING SIZE: C		DRW. NO.
	SURFACE ROUGHNESS 63/			REVISION
	BREAK ALL SHARP EDGES			<b>D05874 F</b>
MATERIAL				SCALE 1:1
6215H	FINISH			SHEET 1 OF 1
USED ON				