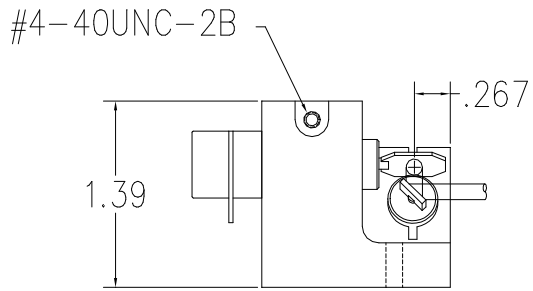
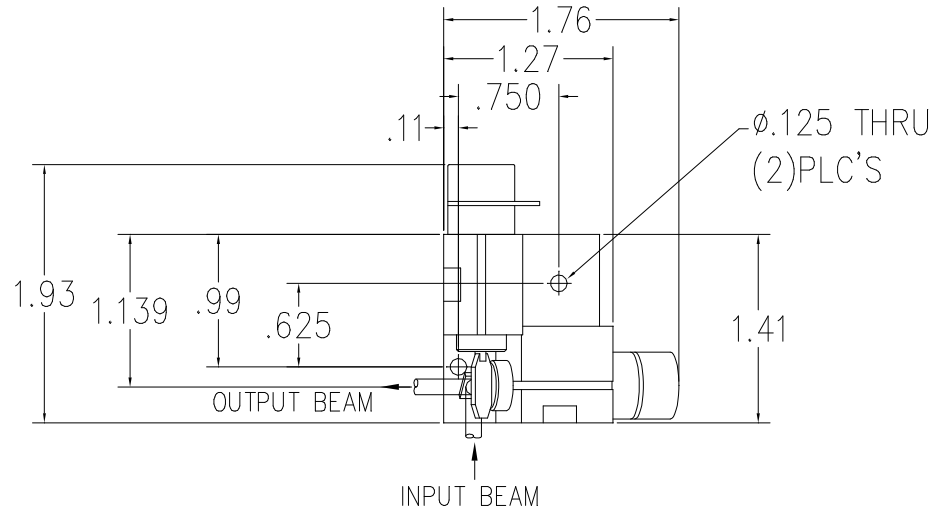
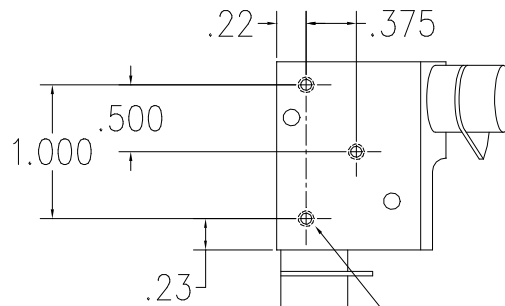
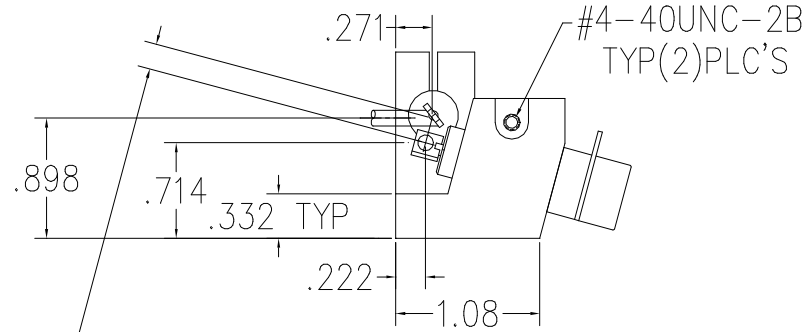


These drawings and specifications are the property of CAMBRIDGE TECHNOLOGY and shall not be reproduced, or copied, or used as the basis for the manufacture, or sale of apparatus without the written permission of CAMBRIDGE TECHNOLOGY, INC.

REVISION				
ECO	REV	DESCRIPTION	CHK	DATE
2035	B	MIRRORS SHOWN WERE .020THK, 1mm SHOWN NOW	PTH	3/02
3435	C	NOTES 1+2 ADDED	PTH	5/06
3774	D	.190 DIM. ADDED	PTH	4/07
3847	E	.191 WAS .190, .267 WAS .271, .898 WAS .897	PTH	6/07



.191 BETWEEN SPOT CENTERS AT NEUTRAL POSITION



NOTES:

1. ALL DIMENSIONS ARE FOR REFERENCE ONLY.
2. RECOMMENDED XY MOUNT CLAMP SCREW TORQUE = 10 in*lb (1.13 N*m).
3. CLAMP SCREW TORQUE TOLERANCE = ±10%.

UNLESS OTHERWISE SPECIFIED	DRN 02/09/99	PTH	CAMBRIDGE TECHNOLOGY, INC.
TOLERANCES	DES		25 HARTWELL AVENUE
.XX = ±0.010	CHK		LEXINGTON, MA. 02421 - USA
.XXX = ±0.005	ENG		6210 XY INTERFACE RH
() INDICATES mm	APPR		3mm ±15° MECH
ANGLES: 0°-30°	PROJECTION		
SURFACE ROUGHNESS 63			
BREAK ALL SHARP EDGES			
MATERIAL	REVISION		D03793
FINISH	E		SCALE : 2x SHEET 1 OF 1